



FAIR ISLE FLOWER COWL



MATERIALS

YARN:

Berroco Mochi , 191 yards per ball
(1) ball in Elderberry, (1) ball in Blueberry

GAUGE:

16 stitches and 24 rows = 4"

NEEDLE:

Size 9/5.50mm, 24" circular

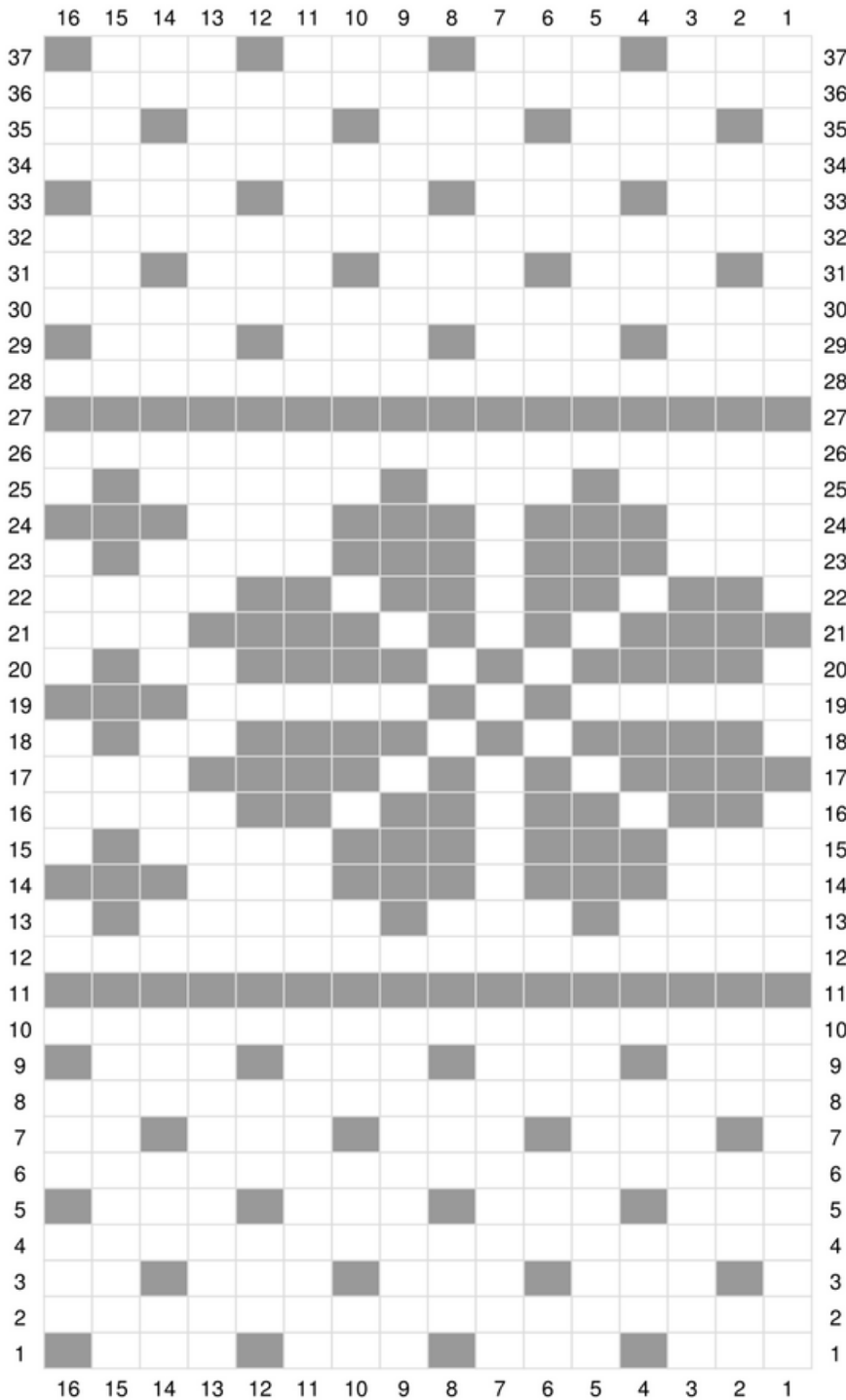
OTHER

Stitch marker(s)
Darning needle

SIZE OPTIONS:

22" (25") Circumference





Designed with Stitch Fiddle
www.StitchFiddle.com



CAST ON

1. Using the knitted-on cast-on method, and with your main color, cast on 96 (112) stitches.
2. Place a stitch marker to designate the beginning/end of the round, and then join your stitches together to begin working in the round, being sure not to have your cast on twisted.
3. (K1, P1) for 3 rows
4. Begin the chart at left, beginning with row 1 in the bottom right corner and working left, joining in your contrast color. **The white blocks are your contrast color, the gray blocks are your main color.** Knit from the chart for all 37 rows.
5. Going back to your main color, repeat step 3 above.
6. Bind off loosely.

FINISHING

Weave in your ends. Gently soak finished cowl in lukewarm water with some wool-friendly detergent. Press water out, then lay flat to dry.

SHARE YOUR
MAKE!

If you have made this pattern, I would love to see it! Share yours on Instagram and tag me at [@thestitchandskein](https://www.instagram.com/thestitchandskein)

